

10/4/2024

"Power Plant Creek"

Coordinates:

Upper trap: 61°11'12"N 151°02'44"W

Lower trap: 61°11'12"N 151°02'43"W

Minnow Trapping sites are located above a power plant, with the creek flowing underneath the plant approximately .27 miles below site. Traps were set between 4:30pm on Oct. 3rd and 10:30am on Oct. 4th. Old beaver activity observed in the area; downed wood, deep channels, and wide boggy floodplain surrounding the area. Aquatic vegetation and key wood provide resting habitat in the stream. Three of the 5 traps that were set caught a total of 15 juvenile coho salmon and 3 Dolly Varden trout, as detailed in the data sheet.

Data Sheet:

TTCD Minnow Trapping 2024			
System Name:	Power Plant Crk		Date:
Trap#:	115	Start:	1630
Lat:	61.186685	Long:	151.045476
Species:	Fork length (mm)		
Coho	96		
total:	1		
comments:	stream full of blown out wood, grass, muck		

TTCD Minnow Trapping 2024			
System Name:	Power Plant Crk		Date:
Trap#:	215	Start:	1630
Lat:	61.186705	Long:	151.045690
Species:	Fork length (mm)		
Coho	117, 74, 120, 106, 100, 95, 103, 78		
DV	138, 110,		
total:	11		
comments:	dark water		

TTCD Minnow Trapping 2024			
System Name:	Power Plant		Date:
Trap#:	415	Start:	1630
Lat:	61.186896	Long:	151.045979
Species:	Fork length (mm)		
no fish			
total:	0		
comments:			

TTCD Minnow Trapping 2024			
System Name:	Power Plant		Date:
Trap#:	515	Start:	1630
Lat:	61.186902	Long:	151.046179
Species:	Fork length (mm)		
Coho	76, 77, 96, 104, 84		
DV	121		
total:	6		
comments:	in grass/weeds		

Photos

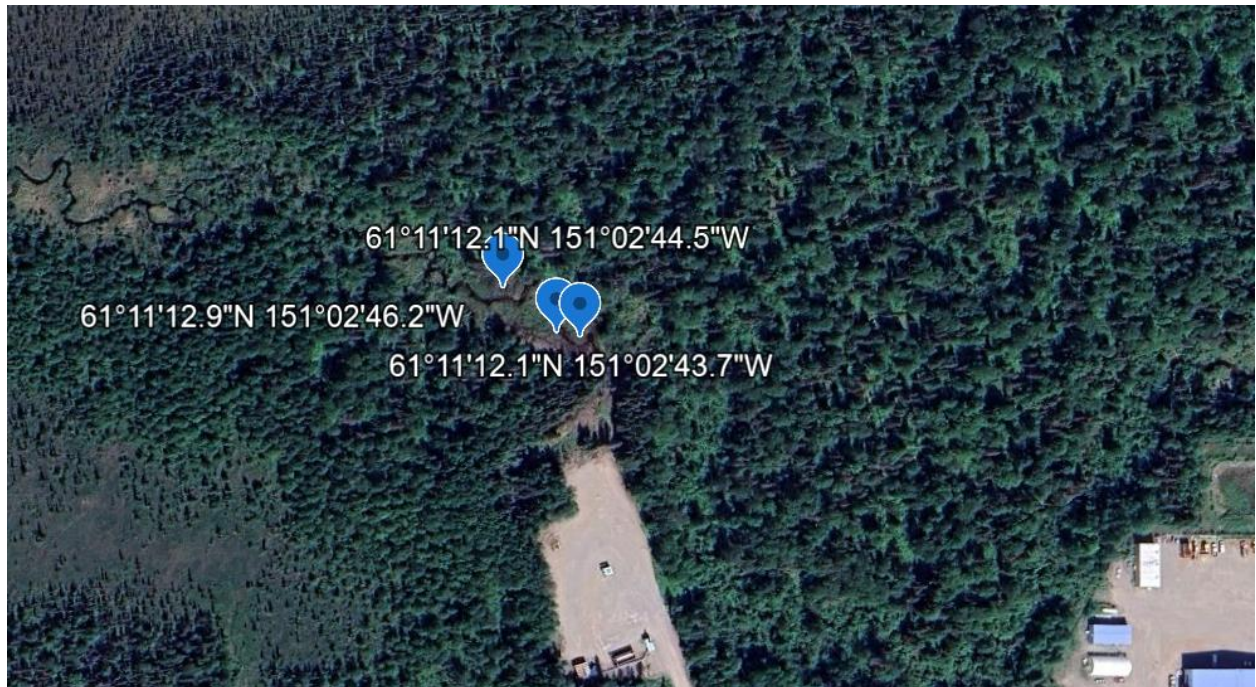






Photos of four of the fifteen juvenile coho salmon caught at the sites.

Map:



Coordinate locations of the uppermost and lowest located traps which caught juvenile salmon.